

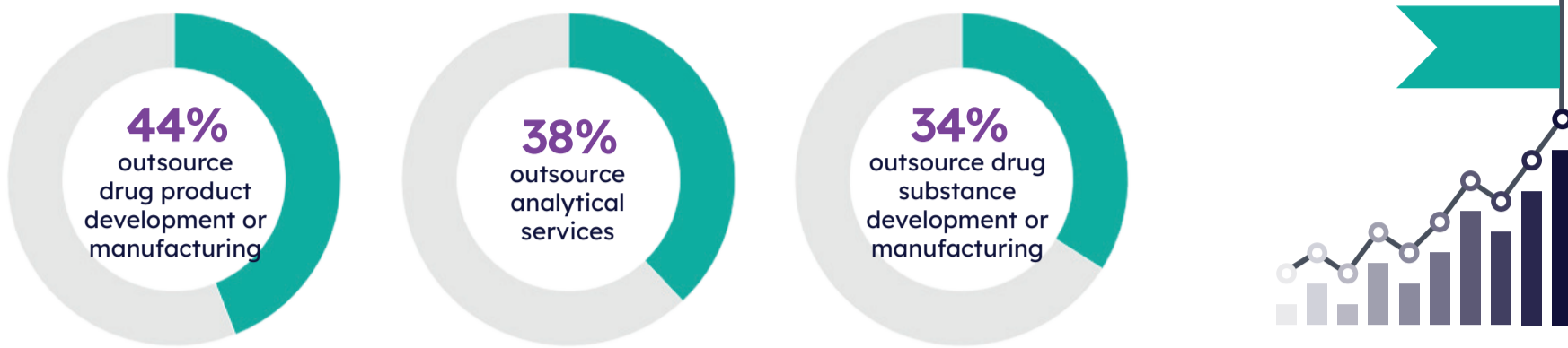
Optimizing Outsourced Operations In Life Sciences

Contract Manufacturing Partnerships & Onshoring Trends

The life sciences industry has seen exponential growth and globalization over the last few decades, impacting biopharmaceutical development tremendously. Given the expanding market, contract development and manufacturing organizations (CDMOs) are attractive for companies looking for the expertise to respond to evolving regulatory and geopolitical pressures. This infographic, brought to you by Citeline and Cambrex, explores current partnership preferences among life sciences organizations, along with onshoring trends that have greatly affected the industry, using data from a recent survey of senior-level executives in the space.

Rising Competition In The CDMO Market

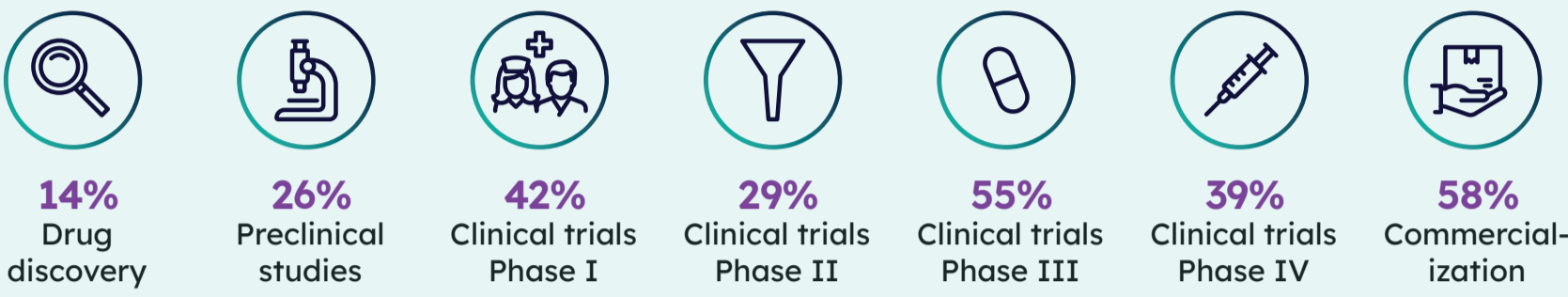
On average, life sciences companies partner with **3-4 CDMOs**.



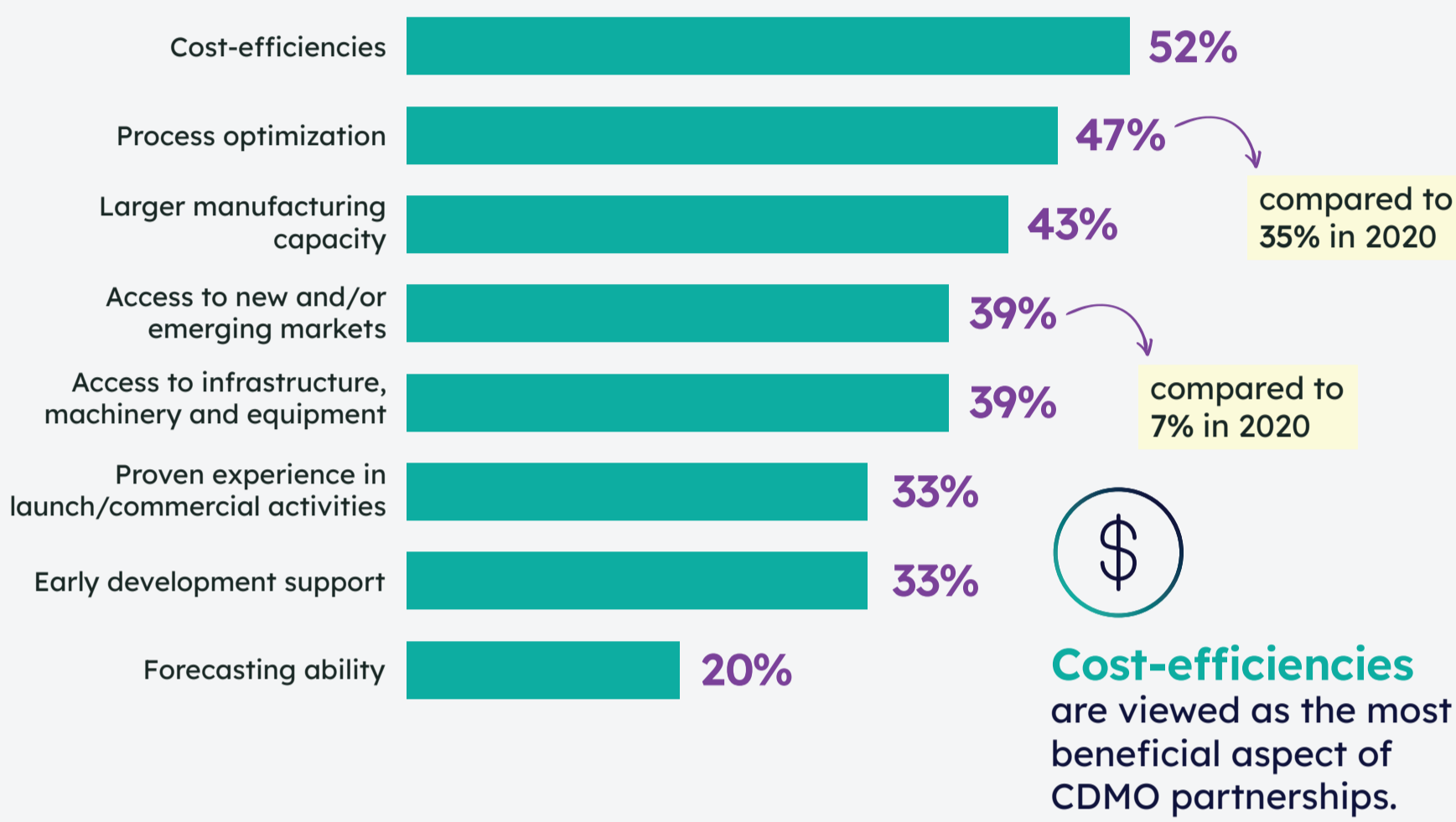
Dual Sourcing

The CDMO market continues to grow with **over one-third** of life sciences companies considering outsourcing two CDMOs for the same services.

An upward trend in dual sourcing is exhibited from drug discovery to commercialization:

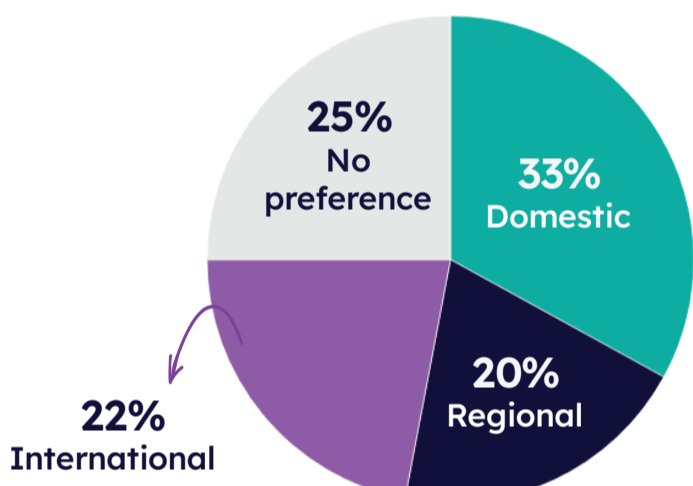


Benefits Of Partnering With CDMOs



CDMO Locality Preferences

While a portion of the industry has no preference for CDMO locality, those who do are leaning more towards **domestic CDMO partnerships**.



COVID-19 Impact

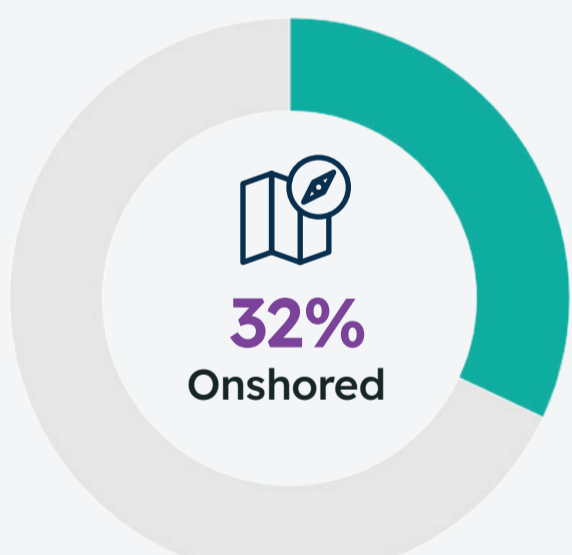
Only **22%** had CDMO locality changes influenced by the COVID-19 pandemic.

Of those, the top reasons for the locality change were:



Onshoring Trends

Many organizations have already brought internationally outsourced operations back to domestic partners or facilities.

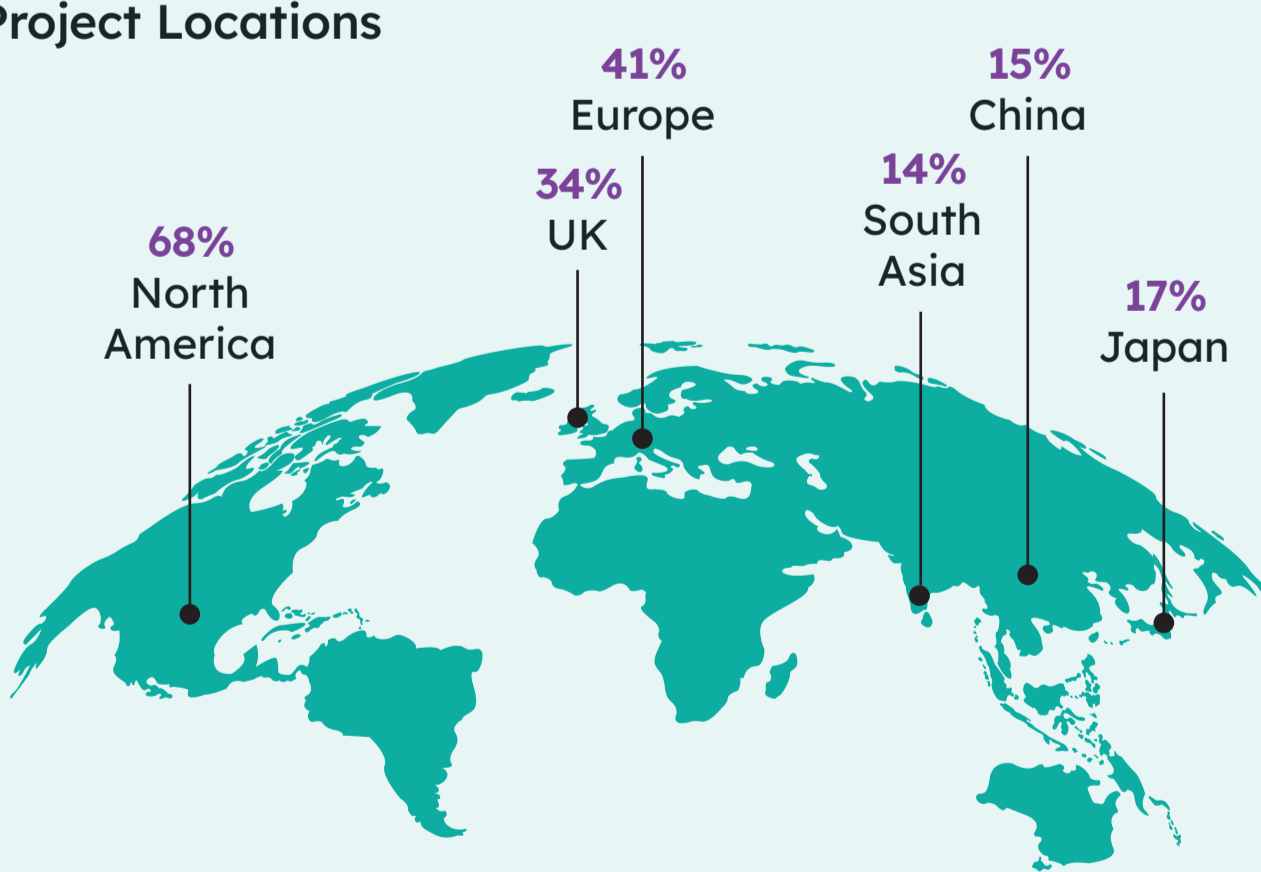


Others are currently making plans to change locality of CDMO partners.



The main driver for onshoring is **quality assurance**, while the main barrier is **risk**.

Future Project Locations



This infographic is brought to you by:



Cambrex is a leading global contract development and manufacturing organization (CDMO) that provides comprehensive analytical and IND enabling services, as well as drug substance development and manufacturing across the entire drug lifecycle.

With over 40 years of experience and a team of 2,000 experts servicing global clients from North America and Europe, Cambrex is a trusted partner in branded and generic markets for API development and manufacturing. Cambrex offers a range of specialized drug substance technologies and capabilities, including continuous flow, controlled substances, solid-state science, material characterization, and highly potent APIs.

Pharma Ignite

Pharma Ignite brings you the most up-to-date and informed intelligence in the industry. Our network of industry-leading analysts and partners is pursuing new intelligence in the core areas of life sciences using Citeline's suite of insights products and services – all of which has the power to fuel your organization and projects.

We also provide cutting-edge lead generation and brand programs to help you reach and collaborate with audiences across industry events and digital platforms.



Citeline (a Norstella Company) powers a full suite of complementary business intelligence offerings to meet the evolving needs of health science professionals to accelerate the connection of treatments to patients and patients to treatments. These patient-focused solutions and services deliver and analyze data used to drive clinical, commercial, and regulatory related-decisions and create real-world opportunities for growth.

Our global teams of analysts, journalists and consultants keep their fingers on the pulse of the pharmaceutical, biomedical and medtech industries, covering it all with expert insights: key diseases, clinical trials, drug R&D and approvals, market forecasts and more.

Source: Survey results from 'Pharmaceutical Onshoring Trends' and 'Ensuring Resilience as Priorities Shift in Supply Chain Management' conducted by Citeline and Cambrex in August 2023 and November 2020, respectively.